

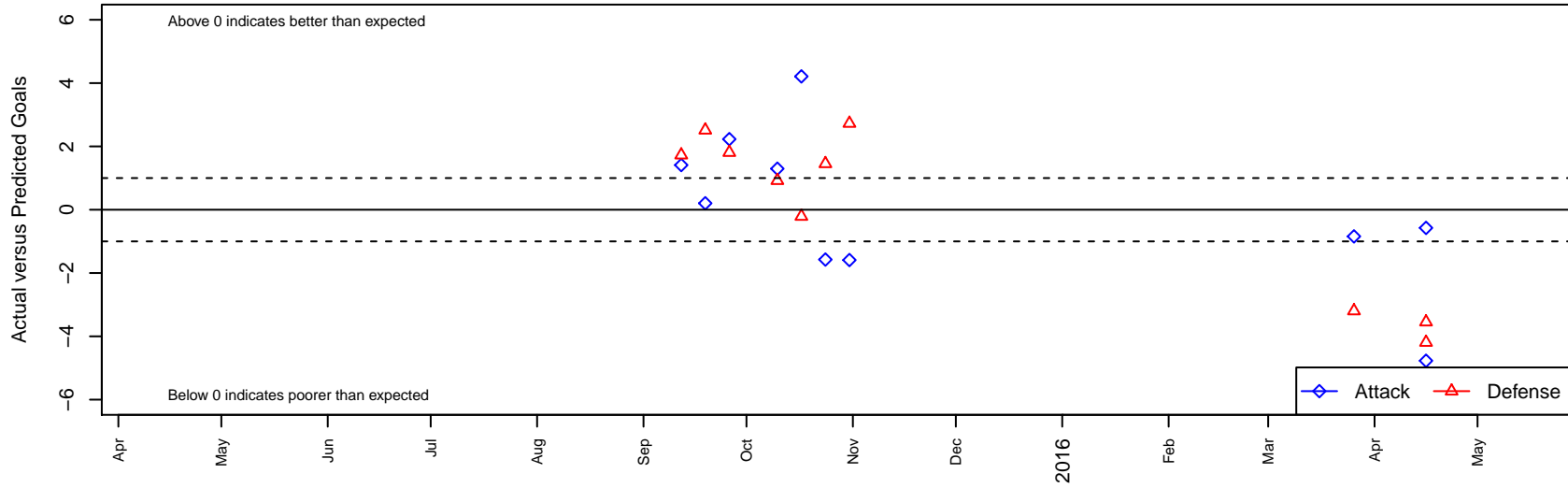
Pullman Pumas G02

Pullman, WA
 G02 total strength=365
 attack=0.38 defense=0.13
 fall league = NWL Group 1 U13
 spr league = Spr NWL U12/U13
 notes= Mickas 2014-5

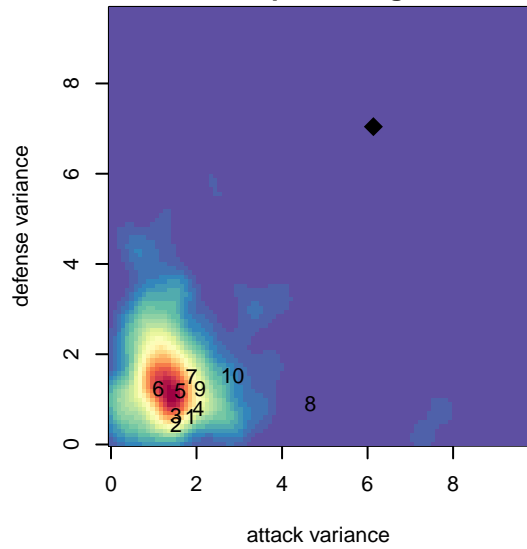
alt names used:
 PULLMAN -MICKAS
 PULLMAN PUMAS

Venues played:
 2015 NWL Group 1 U13
 2015 Spr NWL U12/U13 U13

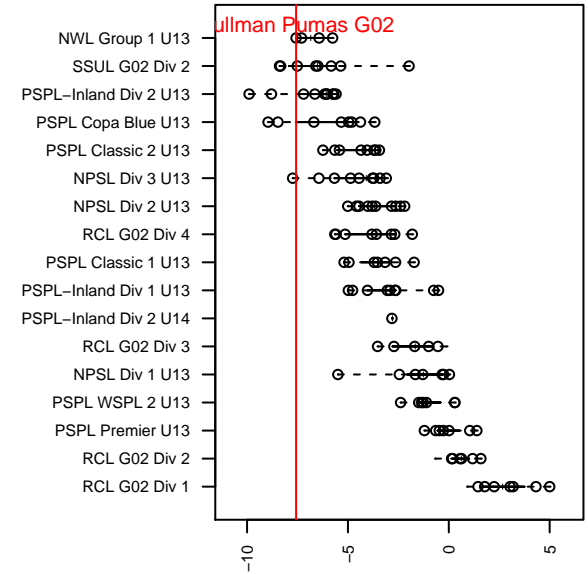
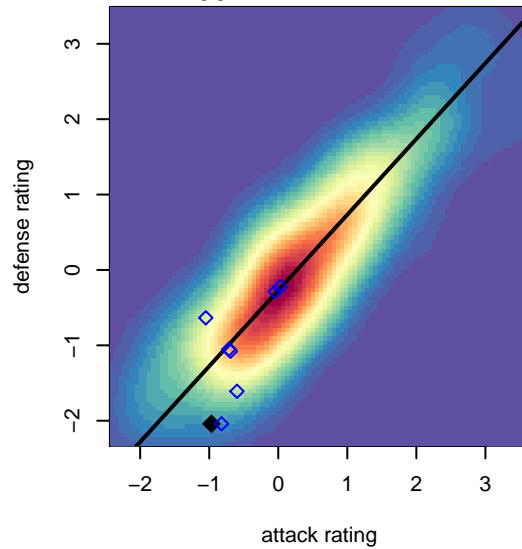
Pullman Pumas G02
 Dots are actual minus expected GF (blue circles) and GA (red triangles).
 Blue line is smoothed change in attack strength. Red is smoothed change in defense strength.



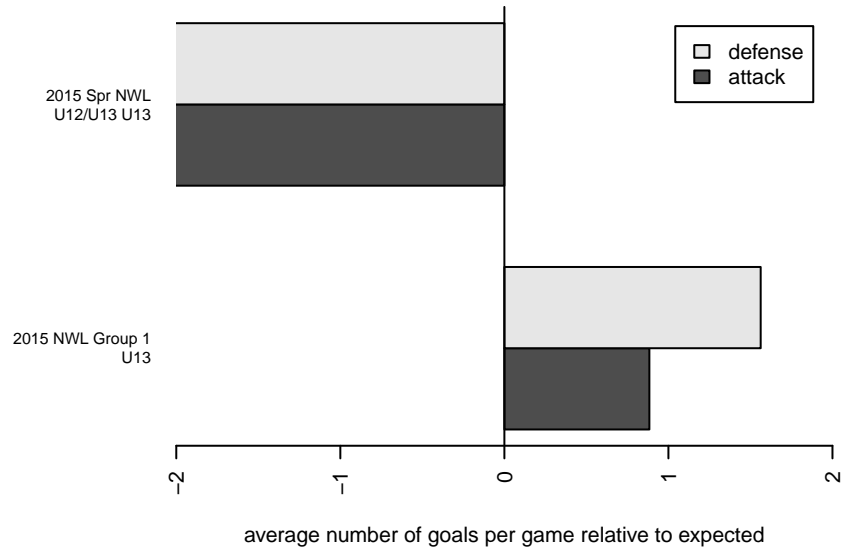
**attack and defense variance (black dot)
relative to other teams
and top 10 in region**



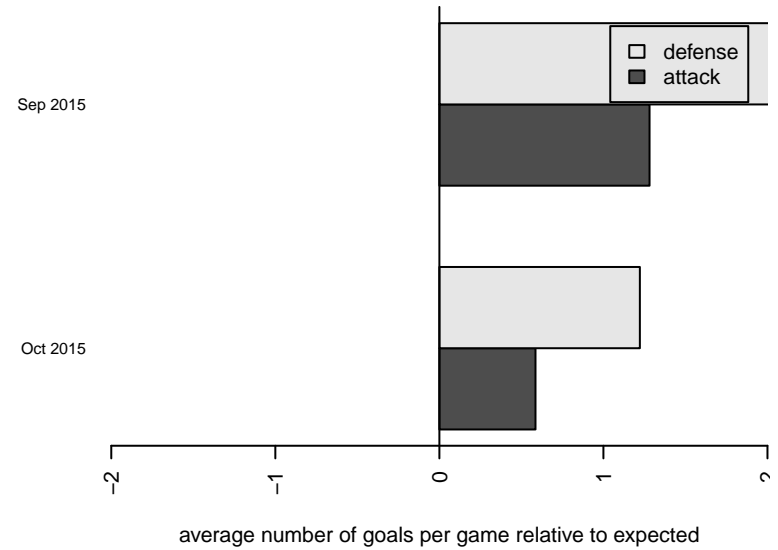
**attack and defense rating
relative to others at age
and all opponents in last 13 months**



Performance relative to 13 month average



Performance relative to 13 month average



| date | home | | away | | venue | pred.home | pred.away |
|-------------|------------------------------------|---|------------------------------------|---|--------------------------|------------------|------------------|
| 2016-04-16 | Pullman Pumas G02 | 0 | SSC Shadow United Lopez G02 | 6 | 2015 Spr NWL U12/U13 U13 | 4.77 | 1.81 |
| 2016-04-16 | Pullman Pumas G02 | 1 | SSC Shadow Elite Krum G02 | 6 | 2015 Spr NWL U12/U13 U13 | 1.57 | 2.45 |
| 2016-03-26 | SSC Shadow United Hall G03 | 9 | Pullman Pumas G02 | 0 | 2015 Spr NWL U12/U13 U13 | 5.80 | 0.84 |
| 2015-10-31 | Pullman Pumas G02 | 1 | Three Rivers SC Black District G02 | 0 | 2015 NWL Group 1 U13 | 2.59 | 2.73 |
| 2015-10-24 | SSC Shadow Elite Krum G02 | 1 | Pullman Pumas G02 | 0 | 2015 NWL Group 1 U13 | 2.45 | 1.57 |
| 2015-10-17 | Pullman Pumas G02 | 6 | Moscow United G02 | 2 | 2015 NWL Group 1 U13 | 1.79 | 1.79 |
| 2015-10-10 | Pullman Pumas G02 | 3 | Valley YSA Wohl G02 | 2 | 2015 NWL Group 1 U13 | 1.70 | 2.92 |
| 2015-09-26 | SSC Shadow United Lopez G02 | 0 | Pullman Pumas G02 | 7 | 2015 NWL Group 1 U13 | 1.81 | 4.77 |
| 2015-09-19 | Pullman Pumas G02 | 1 | Sandpoint Strikers G02 | 3 | 2015 NWL Group 1 U13 | 0.80 | 5.51 |
| 2015-09-12 | Three Rivers SC Black District G02 | 1 | Pullman Pumas G02 | 4 | 2015 NWL Group 1 U13 | 2.73 | 2.59 |